



SHEBOYGAN COUNTY ECONOMIC DEVELOPMENT CORPORATION

BUSINESS RESOURCES - SITE SELECTION - COMMUNITY DEVELOPMENT

SERVICES for Start-Up Companies

Testimonials

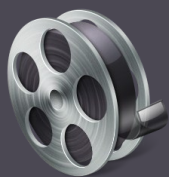
I wanted to thank you again for meeting with me this afternoon...I can't tell you what value, taste of reality, and most importantly, the motivation you offered to me today.

- *Jamie Lynn Burkart*
Plymouth, WI

WOW!! Thank you for the reply, you have passed on great information/ideas!I truly am impressed and grateful of the time and thought you spent.

- *Kelly Jordan*
Wilson, WI

View Testimonials



www.SheboyganCountyEDC.com/
KeepingThePromise

CONTACT US

920-452-2479



Business Plan Creation



- Free guides and templates
- Free counseling
- Professional revision of business plans

Market Research



- Demographics
- Retail sales data
- Benchmarks
- Business lists
- Available properties

Financing Solutions



- Loan programs
- Microloans
- Financial incentives
- Financial structuring

Taking a Big Idea to Market



- Demand analysis
- Product accelerators
- New technology financing
- Investor tax credits
- Angel / venture capital

Personalized Service



- Address questions both big and small
- Removing man-made barriers to growth
- Advocate on your behalf

Network Building



- Business associations
- Supplier/vendor searches
- Introductions

Why Work with Us?



Save Time



Free Services



Save Money



Uncover Opportunities



See Results



Retain Privacy



SHEBOYGAN COUNTY ECONOMIC DEVELOPMENT CORPORATION

BUSINESS RESOURCES - SITE SELECTION - COMMUNITY DEVELOPMENT

About Us

What is the SCEDC?

The Sheboygan County Economic Development Corporation (SCEDC) is a non-profit private/public partnership that offers free information and consulting services to promote and spur business growth in Sheboygan County, WI.

Why do we exist?

The SCEDC was created following several factory closings in 2008-09. Area business and community leaders galvanized economic development efforts by creating the SCEDC. The SCEDC's goals are to:

1. Keep companies in Sheboygan County.
2. Provide companies resources to be competitive in Sheboygan County.
3. Attract new companies to Sheboygan County.

How do we work?

SCEDC staff works directly with companies and their clients to provide timely, accurate information. We serve as both a catalyst and consultant to companies looking to add jobs, make investments, or desire to be competitive in Sheboygan County, Wisconsin. **We allow companies to spend more time on doing what they do best.**



Executive Board Members

Gary Dulmes, Chair
Dulmes Décor

David Aldag, Vice-Chair
Aldag/Honold Mechanical

Tom Liebl, Treasurer
Sheboygan Paper Box

Mel Blanke
Plymouth Industrial Development Corporation

Adam Payne
Sheboygan County

John Rohde
Century 21 Rautmann/Schils

David Sachse
Landmark Consulting

Peter Thillman
Lakeshore Technical College

Bob Werner
Werner Homes

SCEDC's Mission:
To improve the economic well-being and long-term prosperity of the businesses, residents, and communities of Sheboygan County.

Servicing Businesses In ALL of Sheboygan County including:

- Plymouth
- Sheboygan
- Sheboygan Falls
- Adell
- Cascade
- Cedar Grove
- Elkhart Lake
- Glenbeulah
- Howards Grove
- Kohler
- Oostburg
- Random Lake
- Waldo

Our Executive Director



Randy Hopper
Executive Director
(920) 452-2479
Hopper@SheboyganCountyEDC.com

Sheboygan County Economic Development Corporation
508 New York Ave. - Room 209
Sheboygan, Wisconsin 53081
920-452-2479

www.SheboyganCountyEDC.com